



Volkswagen Transporter

T6.1 4MOTION 2.0 TDI



GOLD 2022

SAFETY ASSIST PERFORMANCE



65%

SPECIFICATION

TESTED MODEL	Volkswagen Transporter – T6.1 4MOTION 2.0 TDI
BODY TYPE / CATEGORY	Monocoque / N1
KERB / PAYLOAD / TEST WEIGHT	2021 kg / 979 kg / 2513 kg
APPLIES TO	2019 to present

SAFETY EQUIPMENT

SAFETY ASSIST	Driver	Passenger
Seat Belt reminder	●	○

ADVANCED DRIVER ASSISTANCE SYSTEMS (ON TESTED VARIANT)	
AEB Car-to-Car	○
AEB Pedestrian	○
AEB Cyclist	○
Lane Support Systems	○
Speed Assist Systems	○
Attention Assist	○

● STANDARD ○ FITTED AS OPTION ✗ NOT AVAILABLE

Verdict

The Transporter offers consumers the option to buy a wide range of good-performing safety features and earns a gold medal in Euro NCAP's tests. While it still lags behind the best offered on passenger cars, the Transporter remains one of the commercial vans that sets the bar for others in terms of safety.

For detailed comments see below.

SAFETY ASSIST PERFORMANCE

Total 65%

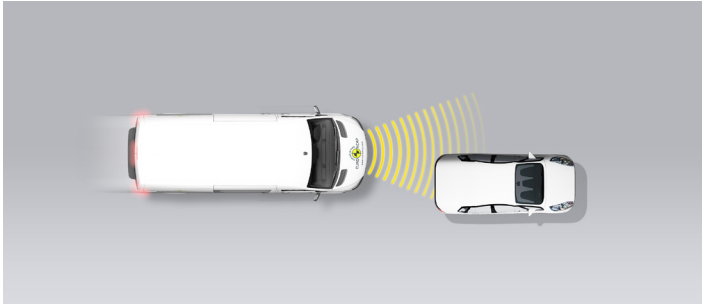
AEB CAR-TO-CAR

15.6 / 30 Pts

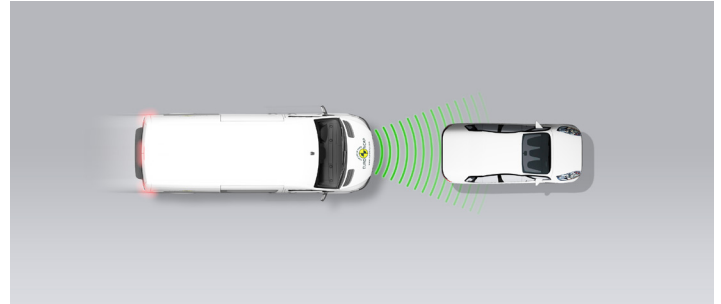
Type	AEB & FCW
Operational From	5 km/h

Autobrake function only

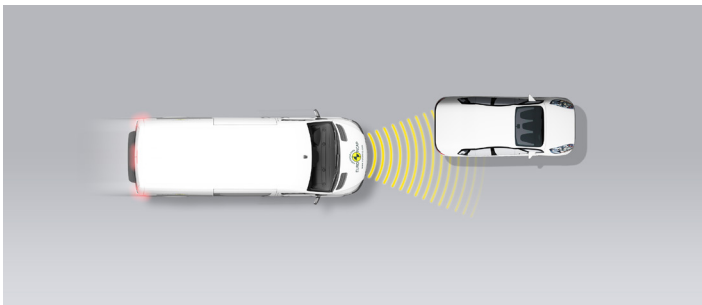
Approaching a stationary car



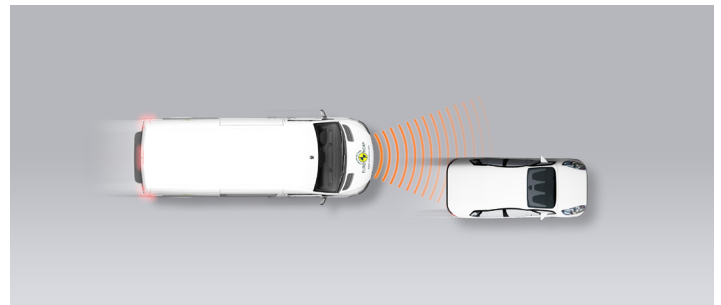
Approaching a stationary car



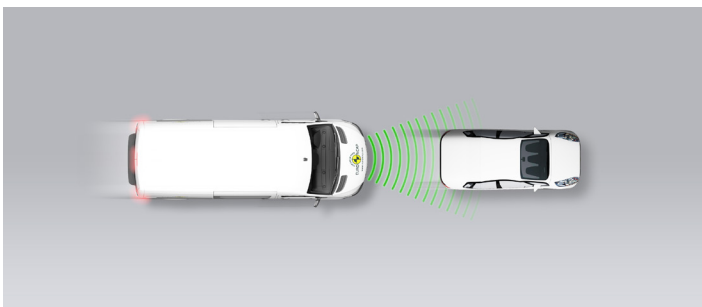
Approaching a stationary car



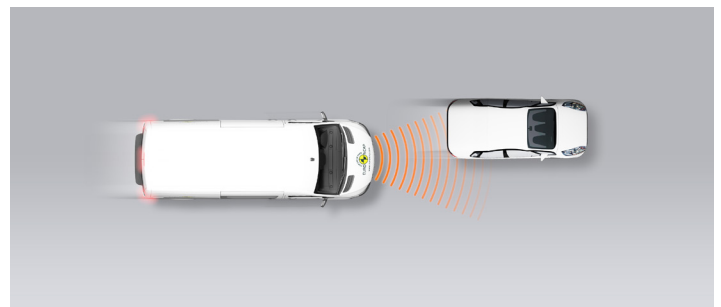
Approaching a slower moving car



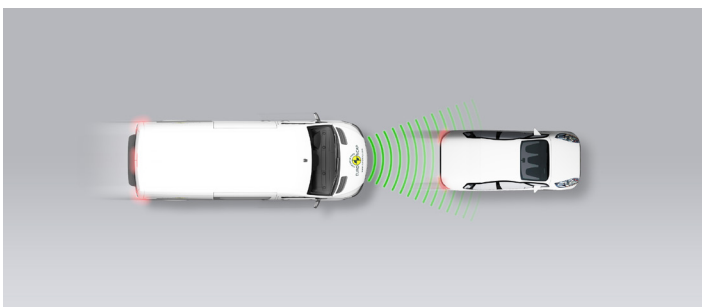
Approaching a slower moving car



Approaching a slower moving car



Approaching a braking car



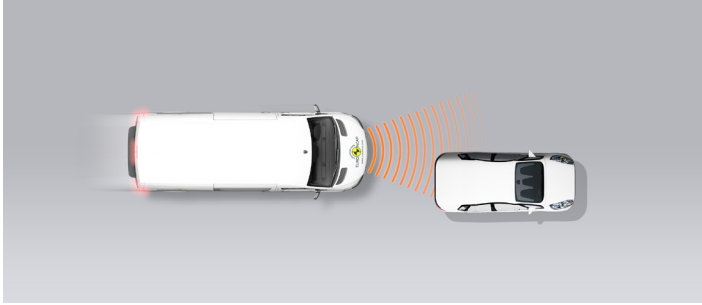
GOOD
 ADEQUATE
 MARGINAL
 WEAK
 POOR

SAFETY ASSIST PERFORMANCE

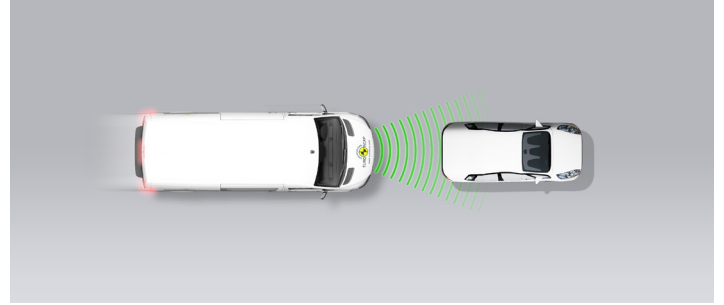
Total 65%

Driver reacts to warning (Forward Collision Warning - FCW)

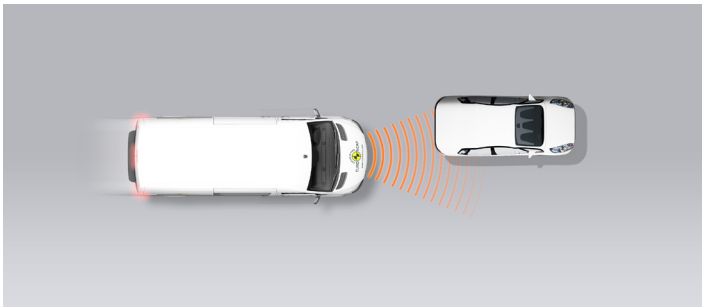
Approaching a stationary car



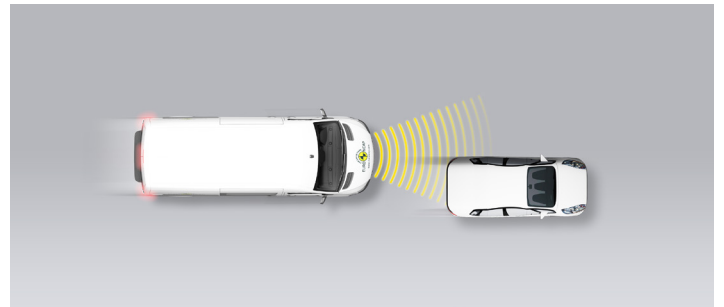
Approaching a stationary car



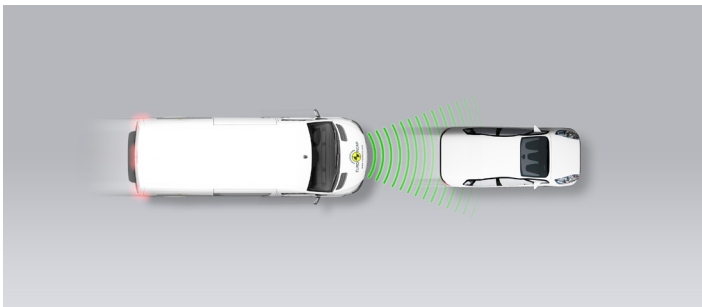
Approaching a stationary car



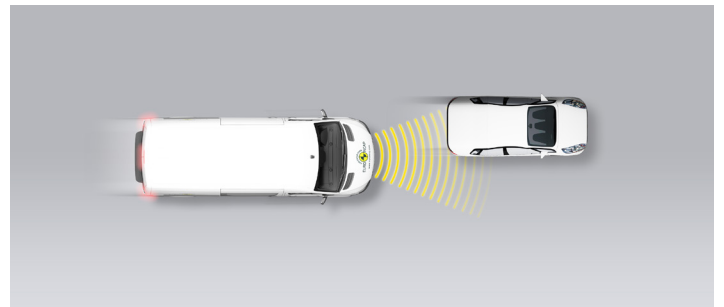
Approaching a slower moving car



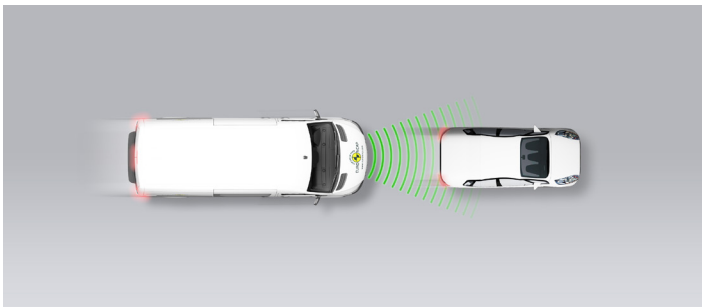
Approaching a slower moving car



Approaching a slower moving car



Approaching a braking car



GOOD ADEQUATE MARGINAL WEAK POOR

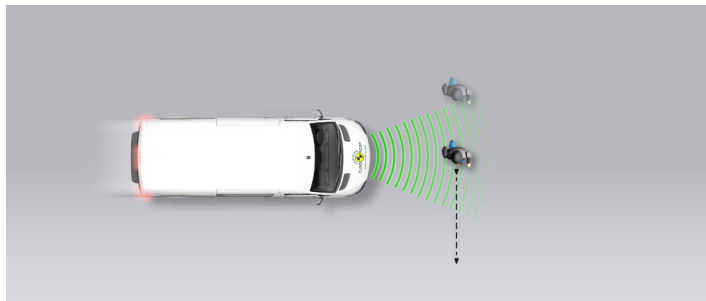
SAFETY ASSIST PERFORMANCE

Total 65%

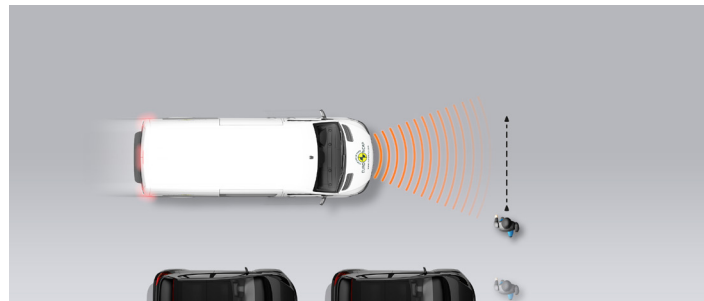
AEB PEDESTRIAN

7.3 / 10 Pts

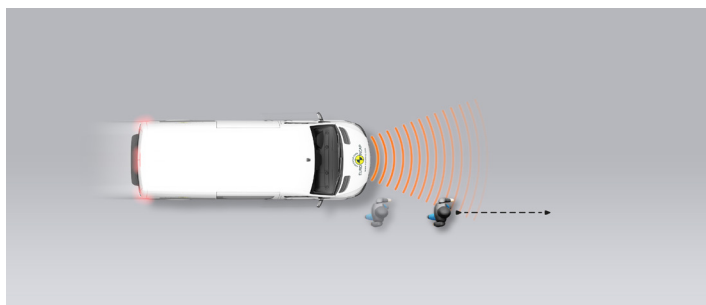
Adult crossing the road



Child running from behind parked vehicles



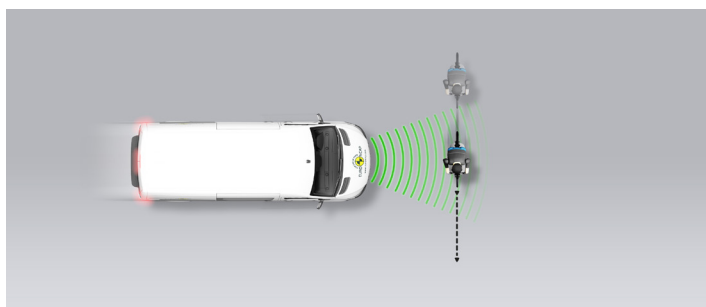
Adult along the roadside



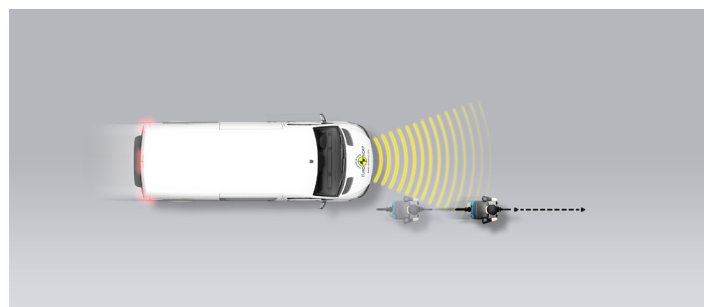
AEB CYCLIST

8.2 / 10 Pts

Cyclist crossing



Cyclist along the roadside



GOOD

ADEQUATE

MARGINAL

WEAK

POOR

SAFETY ASSIST PERFORMANCE

Total 65%

LANE SUPPORT 18.8 / 20 Pts

Type	ELK/LKA, LDW & BLIS
Operational From	60 km/h
PERFORMANCE	
Emergency Lane Keeping (ELK) / Lane Keep Assist (LKA)	■
Lane Departure Warning (LDW)	●
Blind Spot Information System (BLIS)	●

SPEED ASSISTANCE 11.0 / 15 Pts

Speed Limit Information Function	Camera based
Speed Limitation Function	Manually set

OCCUPANT STATUS MONITORING 5.0 / 15 Pts

DRIVER MONITORING	
Attention Assist Driver	●

SEATBELT REMINDER	Driver Seat	Front Passenger
Visual Warning	●	●
Audible Warning	●	●

● PASS
 ● FAIL
 — NOT AVAILABLE

■ GOOD
 ■ ADEQUATE
 ■ MARGINAL
 ■ WEAK
 ■ POOR

 SAFETY ASSIST PERFORMANCE

Total 65%

Comment


Some countries get autonomous emergency braking (AEB) as standard; others do not. The system, comprising forward collision warning (FCW) was fitted to the vehicle tested here. When tested approaching the rear of a car, the system performed well, both when the car was stationary and when it was moving slower than the test vehicle. However, good performance was seen only when the target vehicle was directly ahead of, or only slightly offset from the direction of travel of Transporter. Where there was a significant offset to the left or right, the system did not respond to the target. Similarly, at higher speeds, system performance deteriorated, especially when approaching a stationary target. The system performed well in tests of its response to cyclists, and adequately in tests of pedestrian detection.

The optional lane support system performed well. Lane departure warning (LDW) met Euro NCAP's requirements and was rewarded. Lane keep assist (LKA) recognised all lane edges, marked and unmarked and responded in good time to prevent the vehicle drifting too far over the edge. LKA also incorporates emergency lane keeping (ELK) which intervenes more aggressively in certain emergency situations, and results were good in the tests performed here.

A camera-based traffic sign recognition system identifies the local speed limit and provides the information to the driver who can then engage the speed limiter as appropriate. The speed limit information system performed well and speed was well controlled by the limiter.

A driver's seatbelt reminder system is standard but is an option for the passenger seat. The system on the passenger side did not meet Euro NCAP's requirements and was not rewarded. A driver monitoring system warns the driver if steering behaviour characteristic of fatigued or impaired driving is detected. However, the system does not switch on by default at the beginning of each journey and the system was not rewarded.

 GOOD

 ADEQUATE

 MARGINAL

 WEAK

 POOR

FITMENT

	AUTONOMOUS EMERGENCY BRAKING SYSTEMS			LANE SUPPORT SYSTEMS			SPEED ASSIST SYSTEMS		OCCUPANT STATUS MONITORING SYSTEMS		
	AEB Car-to-Car	AEB Pedestrian	AEB Cyclist	Emergency Lane Keeping / Lane Keep Assist	Lane Departure Warning	Blind Spot Information System	Speed Limit Information Function	Speed Limitation Function	Seat Belt Reminder - Driver	Seat Belt Reminder - Passenger	Attention Assist
Austria	○	○	○	○	○	○	○	○	●	○	○
Belgium	○	○	○	○	○	○	○	○	●	○	○
Bulgaria	○	○	○	○	○	○	○	○	●	○	○
Croatia	○	○	○	○	○	○	○	○	●	○	○
Cyprus	○	○	○	○	○	○	○	○	●	○	○
Czech Republic	○	○	○	○	○	○	○	○	●	○	○
Denmark	●	●	●	○	○	○	○	●	●	○	○
Estonia	○	○	○	○	○	○	○	○	●	○	○
Finland	○	○	○	○	○	○	○	●	●	○	○
France	○	○	○	○	○	○	○	●	●	○	●
Germany	○	○	○	○	○	○	○	○	●	○	○
Greece	○	○	○	○	○	○	○	○	●	○	●
Hungary	○	○	○	○	○	○	○	○	●	○	○
Ireland	○	○	○	○	○	○	○	○	●	○	●
Italy	○	○	○	○	○	○	○	○	●	○	○
Latvia	○	○	○	○	○	○	○	○	●	○	○
Lithuania	○	○	○	○	○	○	○	○	●	○	○
Luxembourg	○	○	○	○	○	○	○	○	●	○	○
Malta	○	○	○	○	○	○	○	○	●	○	○
The Netherlands	○	○	○	○	○	○	○	○	●	○	●
Poland	○	○	○	○	○	○	○	○	●	○	○
Portugal	○	○	○	○	○	○	○	●	●	○	○
Romania	○	○	○	○	○	○	○	○	●	○	○
Slovakia	○	○	○	○	○	○	○	○	●	○	○
Slovenia	○	○	○	○	○	○	○	○	●	○	○
Spain	○	○	○	○	○	○	○	○	●	○	○
Sweden	●	●	●	○	○	○	○	●	●	○	●
United Kingdom	●	●	●	○	○	○	○	●	●	○	●

For latest fitment info for your market, check our [website](#).

● STANDARD ○ FITTED AS OPTION ✗ NOT AVAILABLE — VEHICLE NOT SOLD