



Peugeot Expert

Asphalt, 2.0 HDI 180



SILVER 2022

SAFETY ASSIST
PERFORMANCE



44%

SPECIFICATION

TESTED MODEL	Peugeot Expert — Asphalt, 2.0 HDI 180
BODY TYPE / CATEGORY	Monocoque / N1
KERB / PAYLOAD / TEST WEIGHT	1850 kg / 1250 kg / 2475 kg
APPLIES TO	3 rd generation 2016 to present

SAFETY EQUIPMENT

SAFETY ASSIST	Driver	Passenger
Seat Belt reminder	●	●

ADVANCED DRIVER ASSISTANCE SYSTEMS (ON TESTED VARIANT)	
AEB Car-to-Car	○
AEB Pedestrian	○
AEB Cyclist	✗
Lane Support Systems	○
Speed Assist Systems	●
Attention Assist	○

● STANDARD ○ FITTED AS OPTION ✗ NOT AVAILABLE

Verdict


The Expert pips its stablemate, the Citroën Jumpy, to a silver medal position by virtue of slightly better results for speed assistance. Otherwise, the vehicles are identical and offer a mid-range choice for consumers who are interested in safety and are prepared to pay for the optional equipment.

For detailed comments see below.

 SAFETY ASSIST PERFORMANCE

Total 44%

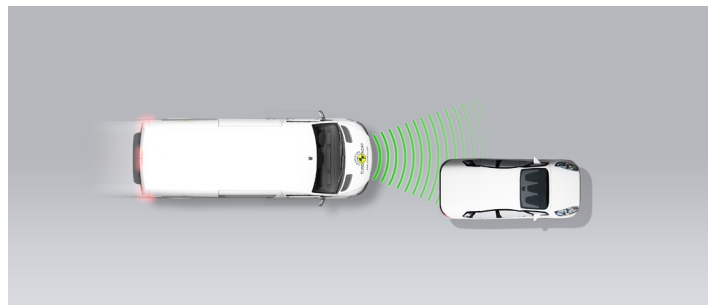
AEB CAR-TO-CAR

 20.6 / 30 Pts

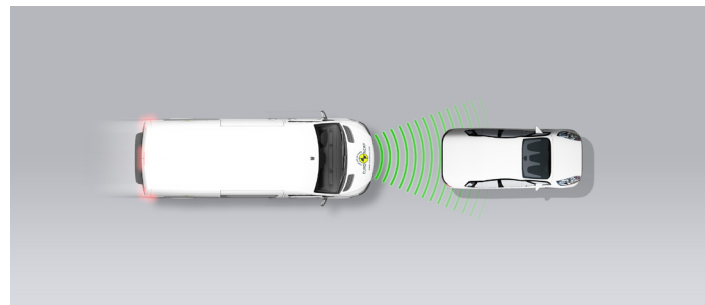
Type	AEB & FCW
Operational From	0 km/h

Autobrake function only

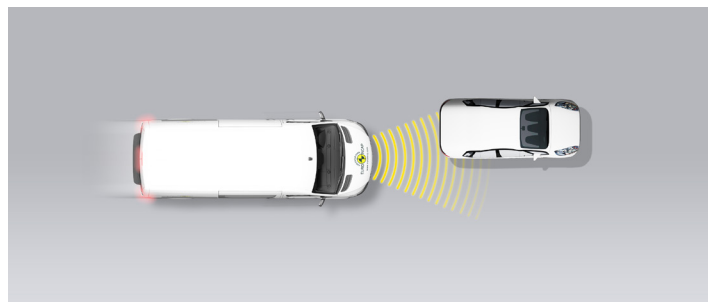
Approaching a stationary car



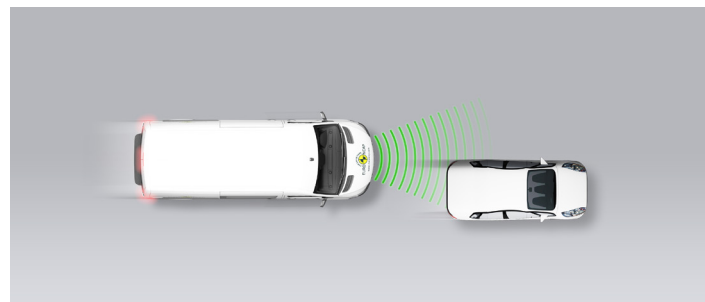
Approaching a stationary car



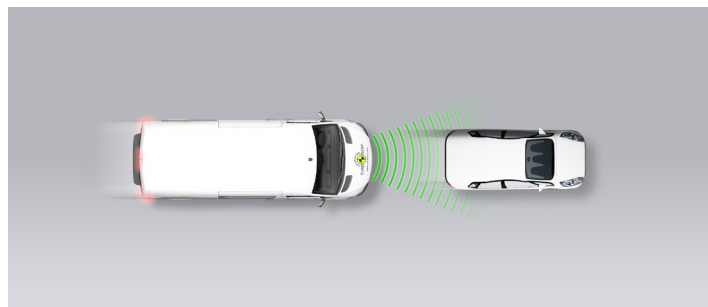
Approaching a stationary car



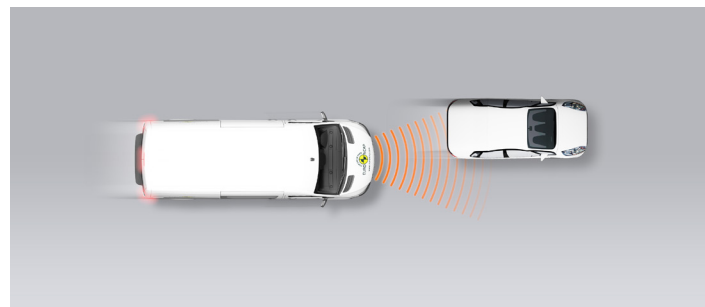
Approaching a slower moving car



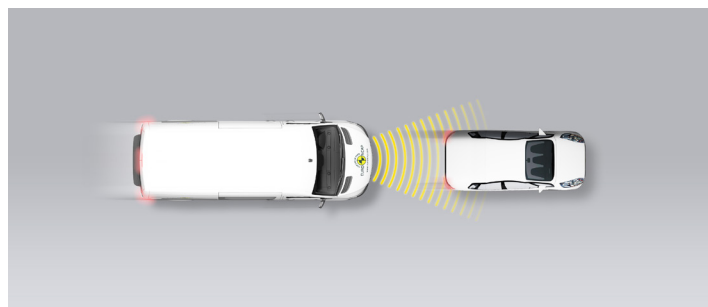
Approaching a slower moving car



Approaching a slower moving car



Approaching a braking car



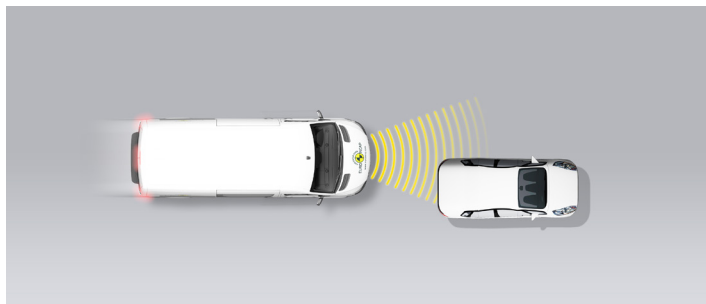
 GOOD
  ADEQUATE
  MARGINAL
  WEAK
  POOR

SAFETY ASSIST PERFORMANCE

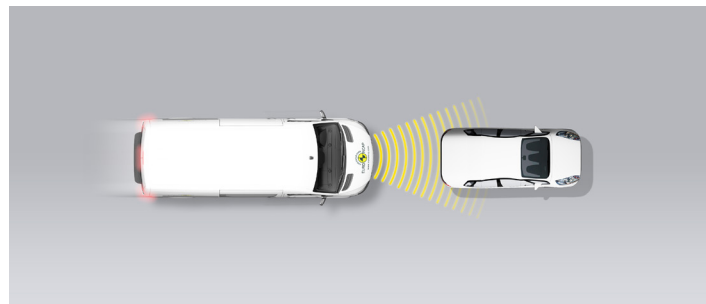
Total 44%

Driver reacts to warning (Forward Collision Warning - FCW)

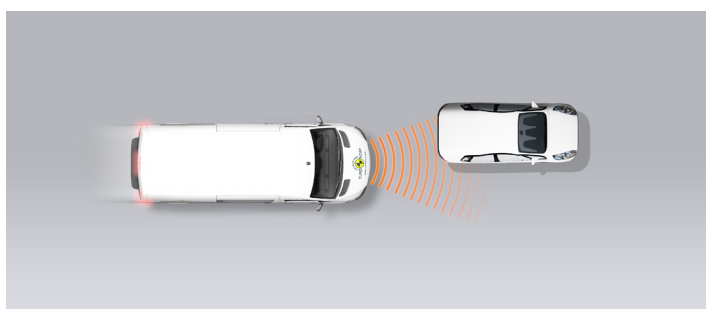
Approaching a stationary car



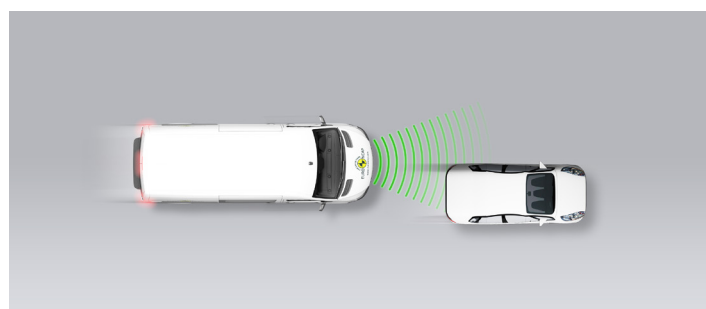
Approaching a stationary car



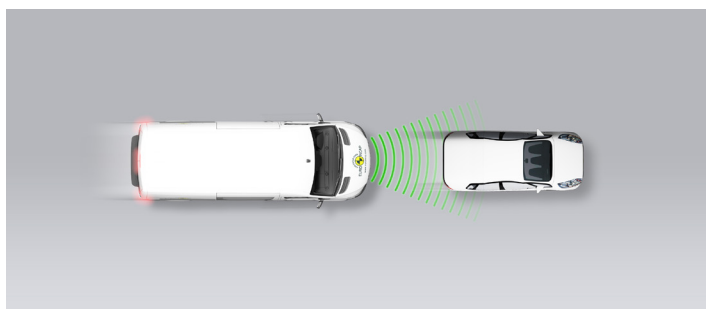
Approaching a stationary car



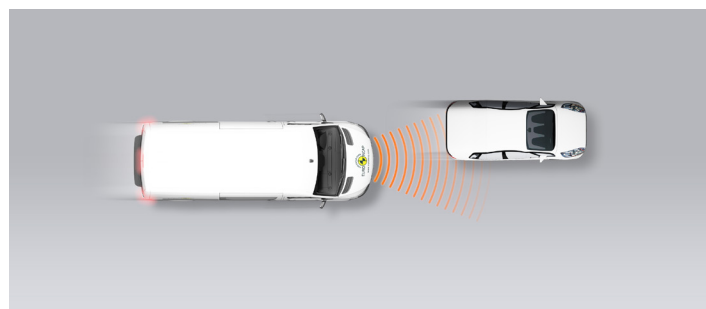
Approaching a slower moving car



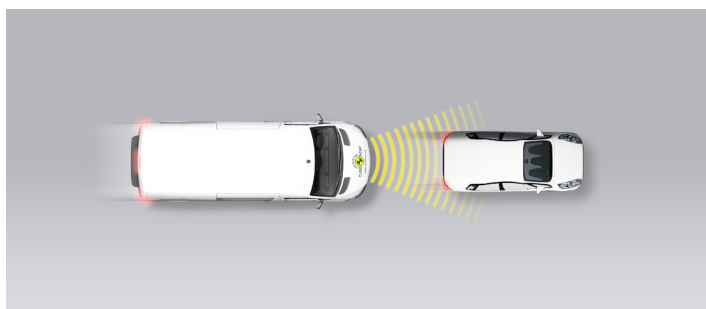
Approaching a slower moving car



Approaching a slower moving car



Approaching a braking car




GOOD ADEQUATE MARGINAL WEAK POOR

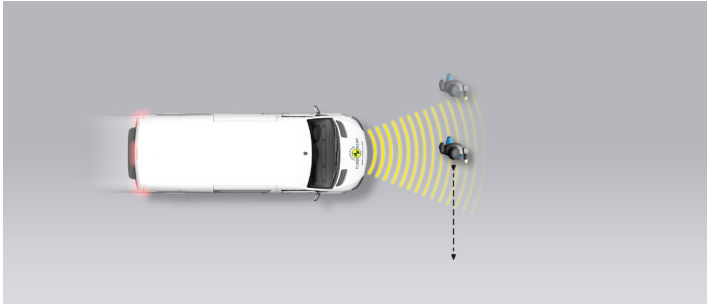
 SAFETY ASSIST PERFORMANCE

Total 44%

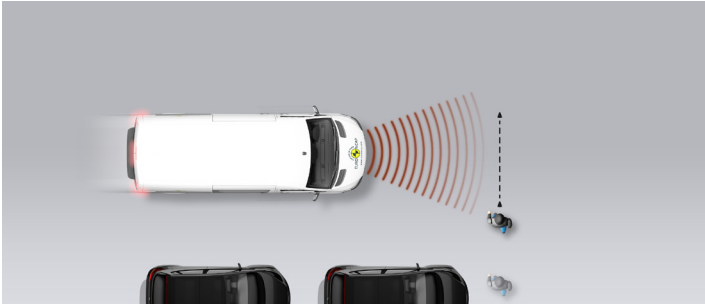
AEB PEDESTRIAN

 4.8 / 10 Pts

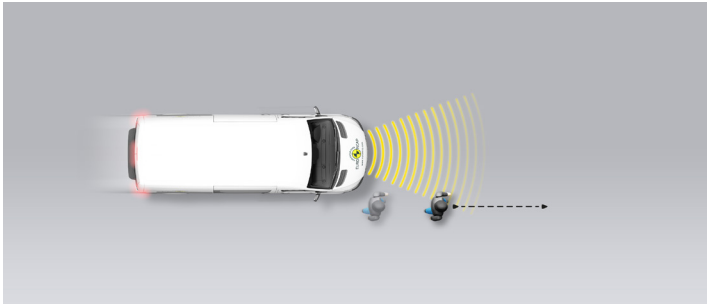
Adult crossing the road



Child running from behind parked vehicles



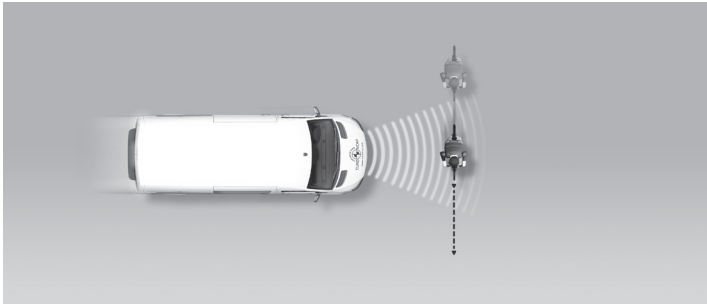
Adult along the roadside



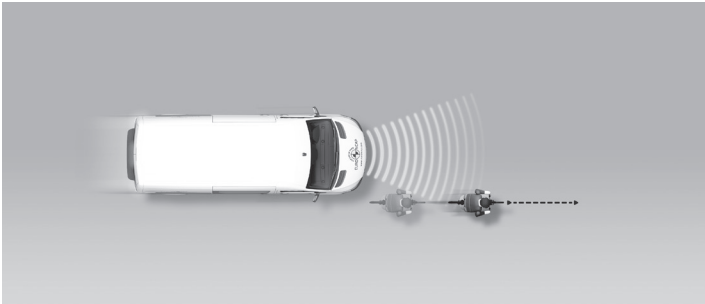
AEB CYCLIST

 N/A

Cyclist crossing



Cyclist along the roadside






	GOOD		ADEQUATE		MARGINAL		WEAK		POOR
--	------	---	----------	---	----------	--	------	---	------

 SAFETY ASSIST PERFORMANCE

Total 44%

LANE SUPPORT

1.3 / 20 Pts

Type	LDW & BLIS
Operational From	80 km/h
PERFORMANCE	
Emergency Lane Keeping (ELK) / Lane Keep Assist (LKA)	
Lane Departure Warning (LDW)	
Blind Spot Information System (BLIS)	






SPEED ASSISTANCE



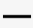
12.9 / 15 Pts

Speed Limit Information Function	Camera & Map
Speed Limitation Function	System advised

OCCUPANT STATUS MONITORING

5.0 / 15 Pts

DRIVER MONITORING			
Attention Assist Driver			
SEATBELT REMINDER	Driver Seat	Front Passenger	
Visual Warning			
Audible Warning			

 PASS
  FAIL
  NOT AVAILABLE

 GOOD
  ADEQUATE
  MARGINAL
  WEAK
  POOR



SAFETY ASSIST PERFORMANCE

Total 44%

Comment

The Expert is a 'corporate twin' to the Citroën Jumpy and is identically equipped. Autonomous emergency braking (AEB) incorporating forward collision warning (FCW) is one safety option. Up to a certain speed, the system performed well in tests where the Expert was approaching the rear of a stationary car, with collisions avoided or mitigated in most cases. However, at the higher test speeds the FCW did not react. When approaching a slower-moving car, performance was better, and was considered adequate even at the higher test speeds. However, it was noticeable that the AEB/FCW performance was very asymmetric. If the target car was offset significantly to the right/left, good performance was maintained. However, if the target was offset significantly to the right/left, there was no reaction from the system and no degree of collision mitigation. The system showed marginal performance in its response to pedestrians. In the case of a child running from behind parked cars on the nearside, performance was poor. The system does not react to cyclists.

Lane departure warning is the only lane assistance system on offer. The system met Euro NCAP's requirements when tested but was not rewarded as it is operational only at speeds above 80 km/h. A blind-spot information system is available as an option.

A speed-limit information system utilises a camera and digital mapping to inform the driver of the local speed limit. This system performed well. The driver-set speed limiter maintained the set speed with sufficient accuracy to qualify for points, unlike the Citroën Jumpy, and on the Expert the system was rewarded.

A seatbelt reminder is standard for the driver's seat and the passenger seat. However, the system failed Euro NCAP's requirements on the passenger side and was not rewarded. A driver-state monitoring system warns the driver if steering inputs characteristic of fatigued or impaired driving is detected. However, this system does not switch on by default at the beginning of each journey so no points were scored.

 GOOD	 ADEQUATE	 MARGINAL	 WEAK	 POOR
---	--	--	---	--

	AUTONOMOUS EMERGENCY BRAKING SYSTEMS			LANE SUPPORT SYSTEMS			SPEED ASSIST SYSTEMS		OCCUPANT STATUS MONITORING SYSTEMS		
	AEB Car-to-Car	AEB Pedestrian	AEB Cyclist	Emergency Lane Keeping / Lane Keep Assist	Lane Departure Warning	Blind Spot Information System	Speed Limit Information Function	Speed Limitation Function	Seat Belt Reminder - Driver	Seat Belt Reminder - Passenger	Attention Assist
Austria	○	○	✗	✗	○	○	○	●	●	●	○
Belgium	○	○	✗	✗	○	○	○	●	●	●	○
Bulgaria	○	○	✗	✗	○	○	○	●	●	●	○
Croatia	○	○	✗	✗	○	○	○	●	●	●	○
Cyprus	○	○	✗	✗	○	○	○	●	●	●	○
Czech Republic	○	○	✗	✗	○	○	○	●	●	●	○
Denmark	○	○	✗	✗	○	○	○	●	●	●	○
Estonia	○	○	✗	✗	○	○	○	●	●	●	○
Finland	○	○	✗	✗	○	○	○	●	●	●	○
France	○	○	✗	✗	○	○	○	●	●	●	○
Germany	○	○	✗	✗	○	○	○	●	●	●	○
Greece	○	○	✗	✗	○	○	○	●	●	●	○
Hungary	○	○	✗	✗	○	○	○	●	●	●	○
Ireland	○	○	✗	✗	○	○	○	●	●	●	○
Italy	○	○	✗	✗	○	○	○	●	●	●	○
Latvia	○	○	✗	✗	○	○	○	●	●	●	○
Lithuania	○	○	✗	✗	○	○	○	●	●	●	○
Luxembourg	○	○	✗	✗	○	○	○	●	●	●	○
Malta	○	○	✗	✗	○	○	○	●	●	●	○
The Netherlands	○	○	✗	✗	○	○	○	●	●	●	○
Poland	○	○	✗	✗	○	○	○	●	●	●	○
Portugal	○	○	✗	✗	○	○	○	●	●	●	○
Romania	○	○	✗	✗	○	○	○	●	●	●	○
Slovakia	○	○	✗	✗	○	○	○	●	●	●	○
Slovenia	○	○	✗	✗	○	○	○	●	●	●	○
Spain	○	○	✗	✗	○	○	○	●	●	●	○
Sweden	○	○	✗	✗	○	○	○	●	●	●	○
United Kingdom	○	○	✗	✗	○	○	○	●	●	●	●

For latest fitment info for your market, check our [website](#).

● STANDARD
○ FITTED AS OPTION
✗ NOT AVAILABLE
— VEHICLE NOT SOLD