



## Nissan Primastar

Renault Trafic 2.0 DCi 120 'Sport'



### SILVER 2022

### SAFETY ASSIST PERFORMANCE



### 45%

## SPECIFICATION

|                              |   |
|------------------------------|---|
| TESTED MODEL                 | Nissan Primastar — Renault Trafic 2.0 DCi 120 'Sport' |
| BODY TYPE / CATEGORY         | Monocoque / N1  |
| KERB / PAYLOAD / TEST WEIGHT | 1757 kg / 1078 kg / 1857 kg                           |
| APPLIES TO                   | 2022 on   |

## SAFETY EQUIPMENT

| SAFETY ASSIST      | Driver | Passenger |
|--------------------|--------|-----------|
| Seat Belt reminder | ●      | ●         |

| ADVANCED DRIVER ASSISTANCE SYSTEMS (ON TESTED VARIANT) |   |
|--|---|
| AEB Car-to-Car   | ○ |
| AEB Pedestrian   | ✘ |
| AEB Cyclist  | ✘ |
| Lane Support Systems                                   | ○ |
| Speed Assist Systems                                   | ○ |
| Attention Assist                                       | ○ |

● STANDARD    ○ FITTED AS OPTION    ✘ NOT AVAILABLE

### Verdict

The Nissan Primastar shares the safety improvements which have been made to the Renault Trafic, to which it is a twin. Following a very poor performance in the 2021 van assessments, the van is offered in 2022 with autonomous emergency braking (AEB) and lane support. With these safety systems, the 2022 Trafic achieves a Silver award which puts it amongst the better-performing vans tested by Euro NCAP in this round of tests.

For detailed comments see below.

**SAFETY ASSIST PERFORMANCE**

Total 45%

AEB CAR-TO-CAR

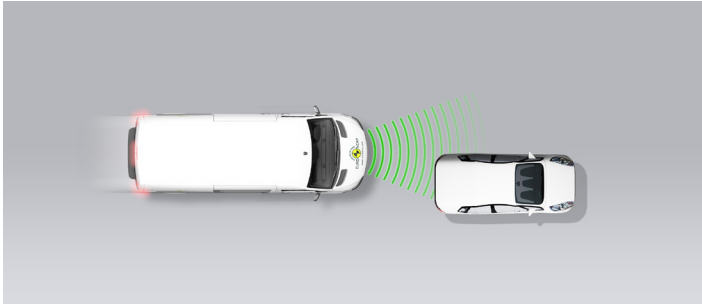


15.5 / 30 Pts

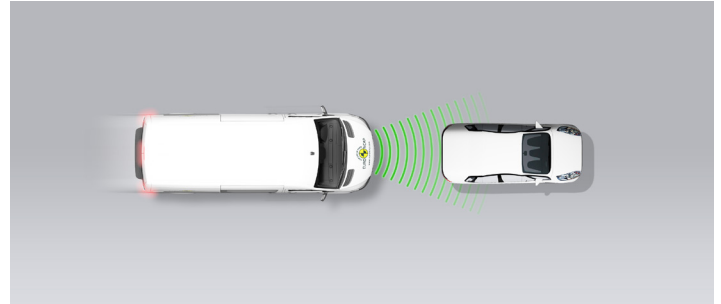
|                  |           |
|------------------|-----------|
| Type             | AEB & FCW |
| Operational From | 5 km/h    |

**Autobrake function only**

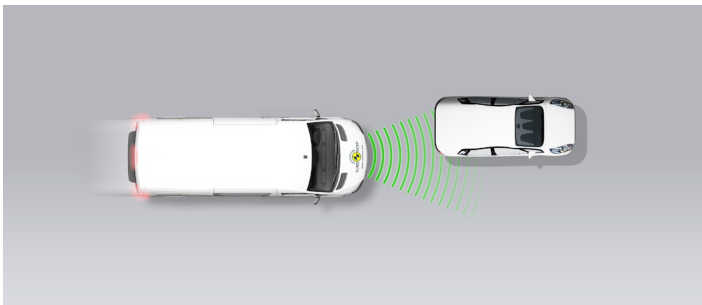
Approaching a stationary car



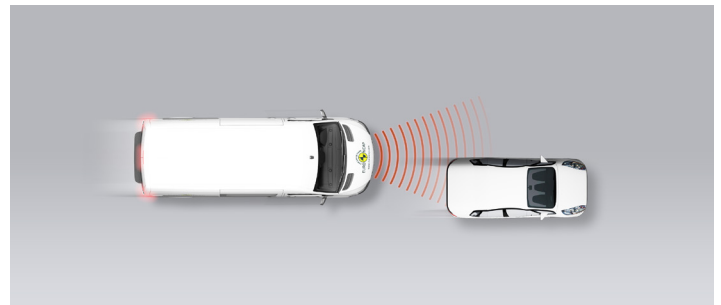
Approaching a stationary car



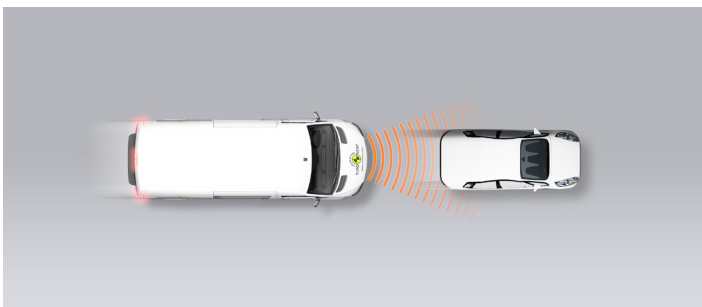
Approaching a stationary car



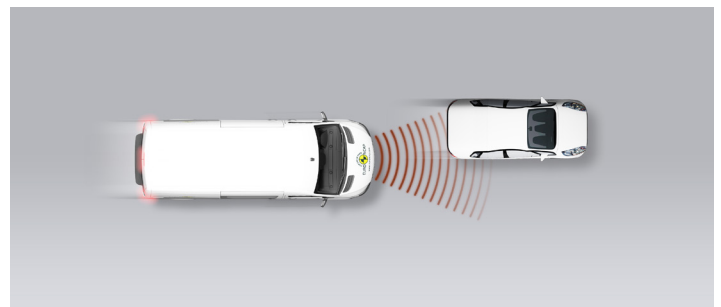
Approaching a slower moving car



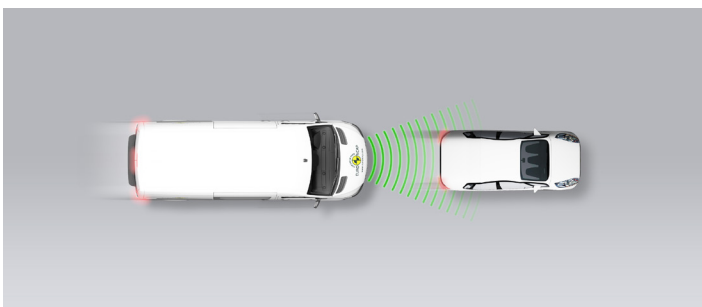
Approaching a slower moving car



Approaching a slower moving car



Approaching a braking car



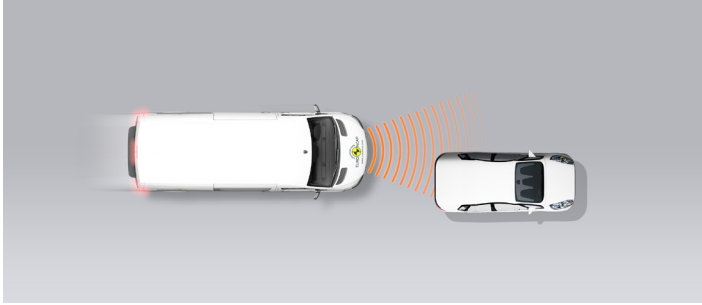
GOOD
  ADEQUATE
  MARGINAL
  WEAK
  POOR

**SAFETY ASSIST PERFORMANCE**

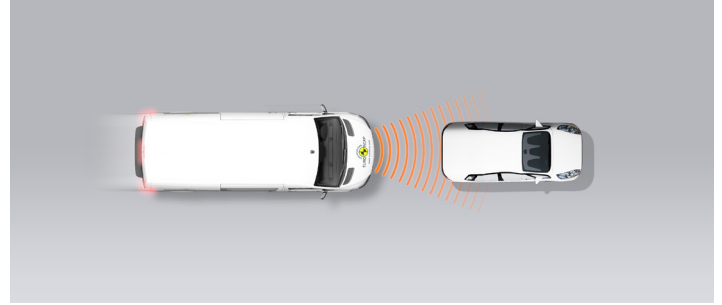
Total 45%

**Driver reacts to warning (Forward Collision Warning - FCW)**

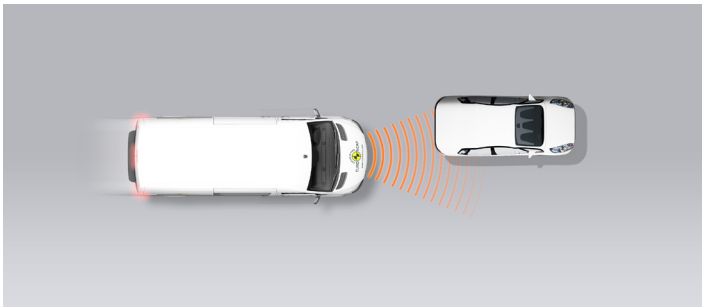
Approaching a stationary car



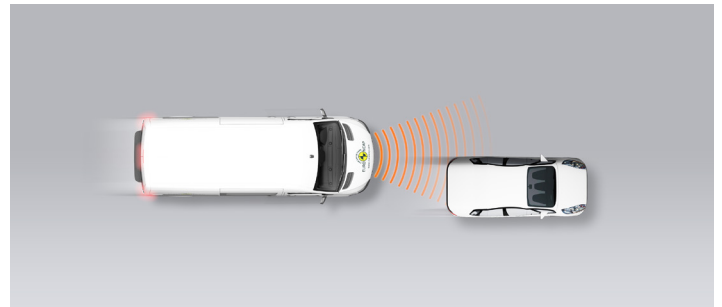
Approaching a stationary car



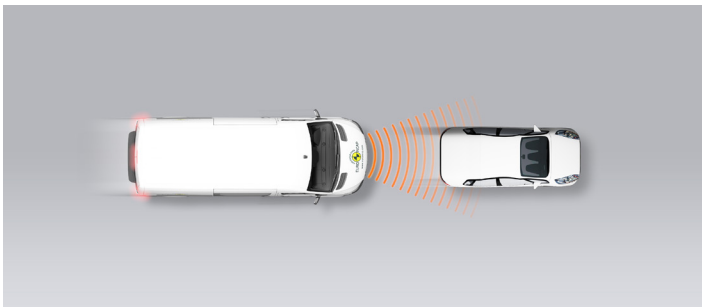
Approaching a stationary car



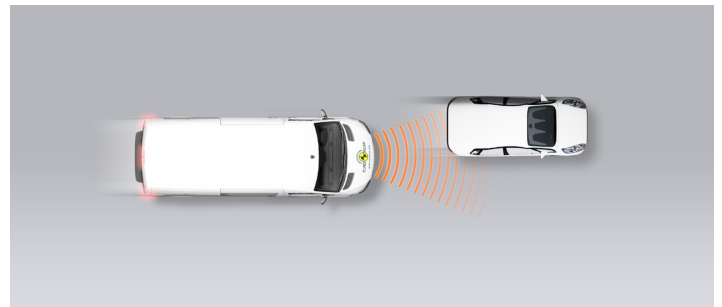
Approaching a slower moving car



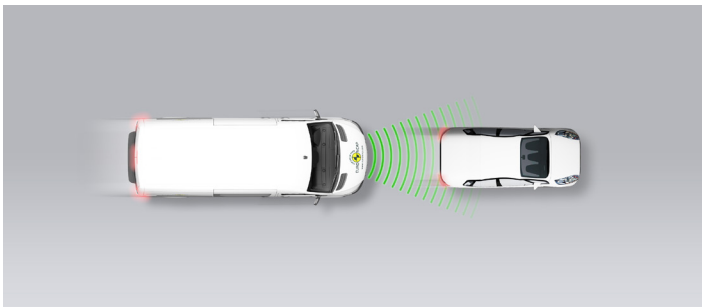
Approaching a slower moving car



Approaching a slower moving car



Approaching a braking car



|   |  |  |   |  |
|---|--|--|---|--|
|  GOOD |  ADEQUATE |  MARGINAL |  WEAK |  POOR |
|---|--|--|---|--|

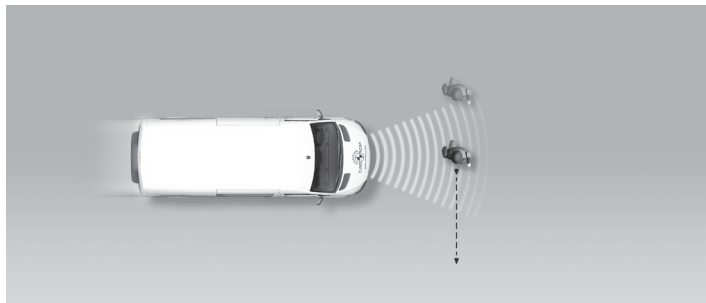
### SAFETY ASSIST PERFORMANCE

Total 45%

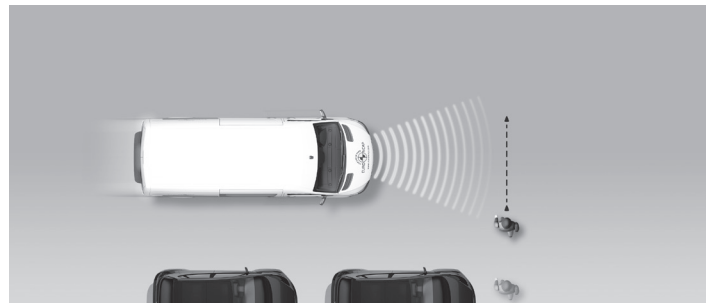
#### AEB PEDESTRIAN

N/A

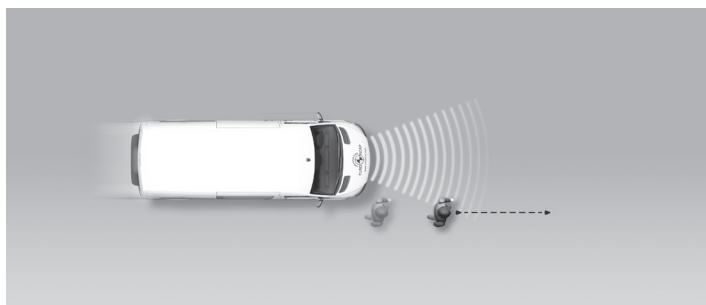
Adult crossing the road



Child running from behind parked vehicles



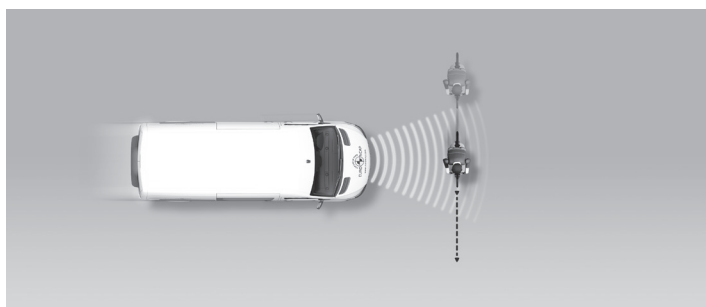
Adult along the roadside



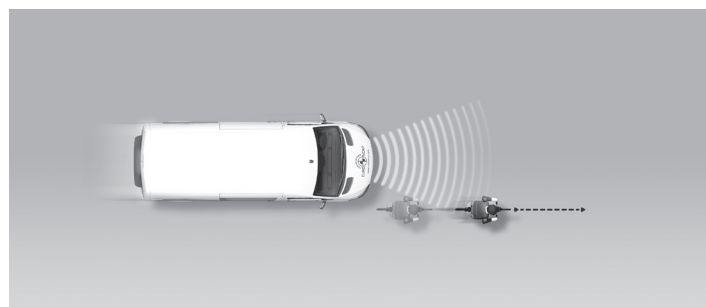
#### AEB CYCLIST

N/A

Cyclist crossing



Cyclist along the roadside



GOOD

ADEQUATE

MARGINAL

WEAK

POOR

# SAFETY ASSIST PERFORMANCE

Total 45%

## LANE SUPPORT 2.5 / 20 Pts

|   |            |
|---|------------|
| Type  | LDW & BLIS |
| Operational From                                      | - km/h     |
| <b>PERFORMANCE</b>                                    |            |
| Emergency Lane Keeping (ELK) / Lane Keep Assist (LKA) |            |
| Lane Departure Warning (LDW)                          |            |
| Blind Spot Information System (BLIS)                  |            |

## SPEED ASSISTANCE 12.3 / 15 Pts

|                                  |                |
|----------------------------------|----------------|
| Speed Limit Information Function | Camera & Map   |
| Speed Limitation Function        | System advised |

## OCCUPANT STATUS MONITORING 15.0 / 15 Pts

|                          |  |
|--------------------------|--|
| <b>DRIVER MONITORING</b> |  |
| Attention Assist Driver  |  |

| SEATBELT REMINDER | Driver Seat | Front Passenger |
|-------------------|-------------|-----------------|
| Visual Warning    |             |                 |
| Audible Warning   |             |                 |

● PASS   
 ● FAIL   
 — NOT AVAILABLE

GOOD   
  ADEQUATE   
  MARGINAL   
  WEAK   
  POOR

 SAFETY ASSIST PERFORMANCE

Total 45%

## Comment


The Renault Trafic was heavily facelifted in the autumn of 2021, with a completely new front-end, new interior and much improved safety equipment. The previous version was extremely poorly equipped but the 2022 van has autonomous emergency braking (AEB) and a lane support system and the Nissan Primastar, a re-badged Trafic, follows suit.

The AEB system showed good performance in tests of its reaction to stationary vehicles, and scored well. Its performance was symmetrical and did not deteriorate significantly as the target vehicle became increasingly misaligned with the centreline of the test vehicle. The forward collision warning (FCW) system performed well up to a modest speed, after which it did not warn in time to prevent collision with the target. The AEB and FCW systems scored less well when tested approaching the back of target vehicles which were moving slower than itself and there was a noticeable diminution of performance as the target became misaligned. When approaching the rear of a braking target, the system performed well in all but the most challenging scenario of a small following distance and heavy braking.

For 2022, a lane departure warning system is offered as an option. This warns the driver when the vehicle is drifting out of lane and the system worked when tested with a solid lane marker and a dashed line, and was rewarded.

For speed assistance, the Primastar has a driver-set speed limiter and a speed limit information system, both as options. A seatbelt reminder is standard equipment for the driver's seat and the passenger seat.

 GOOD

 ADEQUATE

 MARGINAL

 WEAK

 POOR

**FITMENT**

|                 | AUTONOMOUS EMERGENCY BRAKING SYSTEMS |                |             | LANE SUPPORT SYSTEMS                      |                        |                               | SPEED ASSIST SYSTEMS             |                           | OCCUPANT STATUS MONITORING SYSTEMS |                                |                  |
|-----------------|--------------------------------------|----------------|-------------|---|------------------------|-------------------------------|----------------------------------|---------------------------|------------------------------------|--------------------------------|------------------|
|                 | AEB Car-to-Car                       | AEB Pedestrian | AEB Cyclist | Emergency Lane Keeping / Lane Keep Assist | Lane Departure Warning | Blind Spot Information System | Speed Limit Information Function | Speed Limitation Function | Seat Belt Reminder - Driver        | Seat Belt Reminder - Passenger | Attention Assist |
| Austria         | ○                                    | ✘              | ✘           | ✘   | ○                      | ○                             | ○                                | ○                         | ●                                  | ●                              | ○                |
| Belgium         | ○                                    | ✘              | ✘           | ✘   | ○                      | ○                             | ○                                | ○                         | ●                                  | ●                              | ○                |
| Bulgaria        | —                                    | —              | —           | —   | —                      | —                             | —                                | —                         | —                                  | —                              | —                |
| Croatia         | —                                    | —              | —           | —   | —                      | —                             | —                                | —                         | —                                  | —                              | —                |
| Cyprus          | —                                    | —              | —           | —   | —                      | —                             | —                                | —                         | —                                  | —                              | —                |
| Czech Republic  | —                                    | —              | —           | —   | —                      | —                             | —                                | —                         | —                                  | —                              | —                |
| Denmark         | ○                                    | ✘              | ✘           | ✘   | ○                      | ○                             | ○                                | ○                         | ●                                  | ●                              | ○                |
| Estonia         | —                                    | —              | —           | —   | —                      | —                             | —                                | —                         | —                                  | —                              | —                |
| Finland         | ○                                    | ✘              | ✘           | ✘   | ○                      | ○                             | ○                                | ○                         | ●                                  | ●                              | ○                |
| France          | ○                                    | ✘              | ✘           | ✘   | ○                      | ○                             | ○                                | ○                         | ●                                  | ●                              | ○                |
| Germany         | ○                                    | ✘              | ✘           | ✘   | ○                      | ○                             | ○                                | ○                         | ●                                  | ●                              | ○                |
| Greece          | —                                    | —              | —           | —   | —                      | —                             | —                                | —                         | —                                  | —                              | —                |
| Hungary         | —                                    | —              | —           | —   | —                      | —                             | —                                | —                         | —                                  | —                              | —                |
| Ireland         | ○                                    | ✘              | ✘           | ✘   | ○                      | ○                             | ○                                | ○                         | ●                                  | ●                              | ○                |
| Italy           | ○                                    | ✘              | ✘           | ✘   | ○                      | ○                             | ○                                | ○                         | ●                                  | ●                              | ○                |
| Latvia          | —                                    | —              | —           | —   | —                      | —                             | —                                | —                         | —                                  | —                              | —                |
| Lithuania       | —                                    | —              | —           | —   | —                      | —                             | —                                | —                         | —                                  | —                              | —                |
| Luxembourg      | ○                                    | ✘              | ✘           | ✘   | ○                      | ○                             | ○                                | ○                         | ●                                  | ●                              | ○                |
| Malta           | —                                    | —              | —           | —   | —                      | —                             | —                                | —                         | —                                  | —                              | —                |
| The Netherlands | ○                                    | ✘              | ✘           | ✘   | ○                      | ○                             | ○                                | ○                         | ●                                  | ●                              | ○                |
| Poland          | ○                                    | ✘              | ✘           | ✘   | ○                      | ○                             | ○                                | ○                         | ●                                  | ●                              | ○                |
| Portugal        | ○                                    | ✘              | ✘           | ✘   | ○                      | ○                             | ○                                | ○                         | ●                                  | ●                              | ○                |
| Romania         | —                                    | —              | —           | —   | —                      | —                             | —                                | —                         | —                                  | —                              | —                |
| Slovakia        | —                                    | —              | —           | —   | —                      | —                             | —                                | —                         | —                                  | —                              | —                |
| Slovenia        | —                                    | —              | —           | —   | —                      | —                             | —                                | —                         | —                                  | —                              | —                |
| Spain           | ○                                    | ✘              | ✘           | ✘   | ○                      | ○                             | ○                                | ○                         | ●                                  | ●                              | ○                |
| Sweden          | ○                                    | ✘              | ✘           | ✘   | ○                      | ○                             | ○                                | ○                         | ●                                  | ●                              | ○                |
| United Kingdom  | ○                                    | ✘              | ✘           | ✘   | ○                      | ○                             | ○                                | ○                         | ●                                  | ●                              | ○                |

For latest fitment info for your market, check our [website](#).

● STANDARD    ○ FITTED AS OPTION    ✘ NOT AVAILABLE    — VEHICLE NOT SOLD